

Mac Pro[®] Rackmount Kit

Quick Start Guide

STEP 1: UNPACK THE MAC PRO KIT

The box contains the following items:

- Rack Shelf
- Mac Pro Bracket
- Two (2) Clamps
- Four (4) Cage Nuts
- Four (4) 10-32 X 3/8 Screws
- Velcro Straps



STEP 2: INSTALL THE RACK SHELF

If needed, install the four (4) Cage Nuts onto the front of the rack at the location the rack shelf will be installed.

Position the rack shelf in the rack and install using the four (4) 10-32 X 3/8 Screws provided making sure the screws are tight.



STEP 3 : SWITCH MAC PRO CONFIGURATION (OPTIONAL)

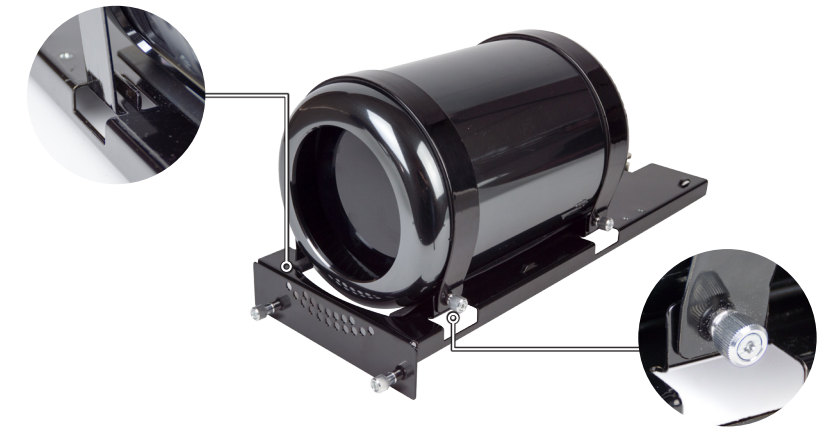
The MAC PRO bracket assembly comes installed already on the right side, but may be switched over to the left side. To do this carefully slide the MAC PRO bracket assembly with the MAC PRO unit installed out of the mounted shelf. Using the two thumbscrews on the front of the bracket assembly, tighten thumbscrews into the shelf.



STEP 4: INSTALL THE MAC PRO TO BRACKET

Install the MAC PRO[®] units onto the computer mounting brackets using the clamps provided.

Make sure the thumbscrews are tight and the MAC PRO[®] is secure, one on each mounting bracket. Please note that a screwdriver is required to tighten the screws.



NOTE: The position of the Mac Pro is entirely based on the user's configuration. For instance, if you have it in a rack with several other i/o interfaces installed that generate heat, then the air in the back of the rack is usually hot and thus you should place the Mac Pro so that it is drawing in cool air from the front so that the heat from the the Mac Pro is pushed towards the rear of the rack.

STEP 5: INSTALL THE EXPRESSBOX 3T (OPTIONAL)

Install the ExpressBox 3t by placing it either horizontally or vertically into the area of the rack shelf not occupied by the Mac Pro.



STEP 6: INSTALL EXTERNAL CABLES

Install external cables and tie along the mounting bracket using the provided Velcro straps.

NEED MORE HELP?

Download the User Manual

Magma Website: www.magma.com Magma Support: support.magma.com

Call Us: 1-800-285-8990 or 1-858-530-2511



WARNING

Electrostatic Discharge (ESD) Warning

Electrostatic Discharge (ESD) is the enemy of semiconductor devices. You should always take precautions to eliminate any electrostatic charge from your body and clothing before touching any semiconductor device or card by using an electrostatic wrist strap and/or rubber mat.

FCC Statement

NOTE: This equipment has been tested and found to comply with the limits for a Class A digital device, pursuant to part 15 of the FCC Rules. These limits are designed to provide reasonable protection against harmful interference when the equipment is operated in a commercial environment. This equipment generates, uses, and can radiate radio frequency energy and, if not installed and used in accordance with the instruction manual, may cause harmful interference to radio communications. Operation of this equipment in a residential area is likely to cause harmful interference in which case the user will be required to correct the interference at his own expense. Changes or modifications not expressly approved by the party responsible for compliance could void the user's authority to operate the equipment.

This device complies with Part 15 of the FCC Rules. Operation is subject to the following two conditions: (1) this device may not cause harmful interference, and (2) this device must accept any interference received including interference that may cause undesired operation.

Industry Canada

This Class A digital apparatus complies with Canadian ICES-003.
Cet appareil numérique de la classe A est conforme à la norme NMB-003 du Canada

CE

The product(s) described in this manual complies with all applicable European Union (CE) directives. Magma will not retest or recertify systems or components that have been reconfigured by customers.

© 2014 Magma is a trademark of Mission Technology Group, Inc.